

Nitin Nangare



gallery g warmly invites you to
an art exhibition
Faces Forces Forms II,
in celebration of the
Bangalore Lit Fest 2014

From 10 am on Friday 26th September 2014.
at the Crowne Plaza, Velankanni Tech Park,
Electronics City, Hosur Road.

The exhibition continues till Sunday the 28th September.

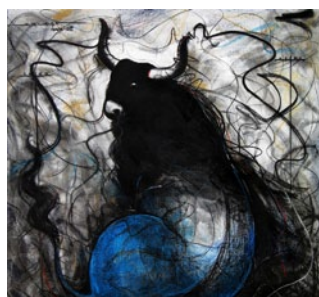
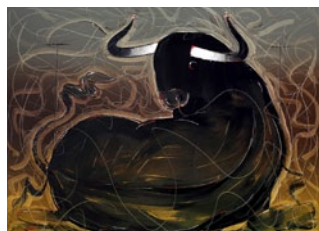
PAINTINGS:
NITIN NANGARE
SUJITH KUMAR G.S.
MANDYA
SCULPTURES:
TARUN MAITY
SUVAJIT SAMANTA



gallery-g



faces | forces | forms-2



Sujith Kumar
G.S. Mandya

Faces Forces Forms II includes **Nitin Nangare**, one of India's most eminent painters, and an old gallery g hand. His first edition of *Faces Forces Forms* with us in 2006 was a watershed, with its elegant, elegiac homages to rural women. Here he stays true to his theme and

its timelessness.

Sujith Kumar G.S. Mandya, who shows with us for the first time, canvases of bulls, surging and forceful, that re-engineer our primeval regard for this representative of *Bos Taurus Indicus*.



Tarun
Maity



The sculptures in this show have been curated with our associate gallery in Kolkata.



Janus
ART GALLERY

faces | forces | forms-2

Tarun Maity, working in wood, terracotta, bronze and ABS fibreglass. His portfolio is bold, experimental and switches between the realistic and the surreal. He names his sculptures to resonate semi-autobiographically and by rendering everyday objects in these

materials, he challenges us to look again and question our assumptions as do the other artists in this show, and

Suvajit Samanta who works in steel, bronze and fibreglass usually to a smaller than life-size scale. His

figures are detailed, modern and directional even while they suggest a child's take on what a grownup world might be where the storybook up-ends reality.

Suvajit
Samanta



Suvajit Samanta
Communication
Brass
6X7X13 inch



This is **gallery g**'s first show outside our own spaces and it's at the Bangalore Lit Fest to honour the mutuality of art and literature, two of our primary means of creative expression.

It's been specially curated for those who are attending the Bangalore Lit Fest from all over India and abroad. Consequently it will show

pieces that affirm India's exciting contemporary status in world art.

For this reason, the location in Electronic City is significant as it symbolises our journey as a city that's a world cultural destination.

We hope you enjoy Faces, Forces, Forms II.




gallery-g


Maini Sadan, 38 Lavelle Rd, 7th Cross,
Bangalore 560 001.

Ph: +91 80 2221 9275, 4095 7559

gita@gallerygbangalore.com

Visit us at www.gallerygbangalore.com

 Like us at galleryg

 Follow us on [gallery_g_arts](https://twitter.com/gallery_g_arts)