



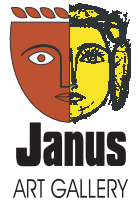
gallery-g

We invite you to personally preview our new show 4BY3  
featuring Hitendra Singh Bhati.

Sunday 22nd June 2014

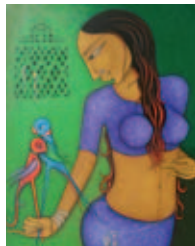
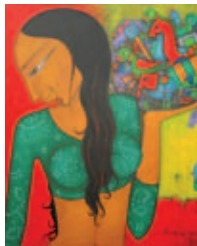
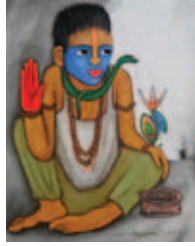
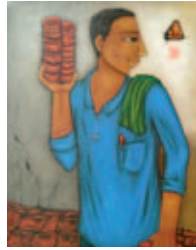
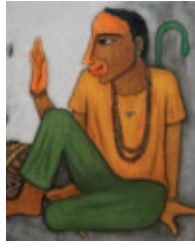
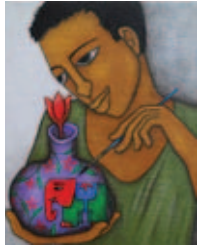
11 am-5pm and until

Monday 30th June 2014



Quiet weekend preview time for a summer's day,  
the season's most intriguing – and affordable – new works  
in your own secluded viewing space: Gallery g Lavelle.

4BY3



### HITENDRA SINGH BHATI

Doe-eyed takes on modern relationships  
between people and their worlds.

In the painter's words: "Life's simple pleasures matter: a whisper is sometimes more eloquent than a scream and the immediate more rewarding than the eventual. My interest is less in what these fringe characters of our society do, than in the consequences which attend their doings."





Raja Rajan

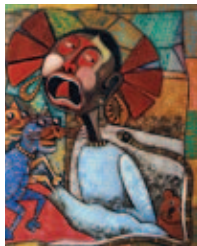
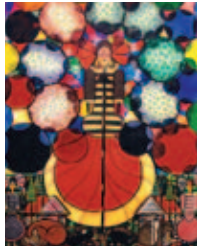
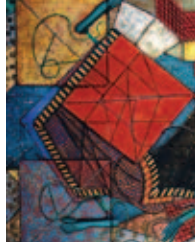
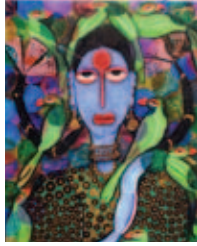
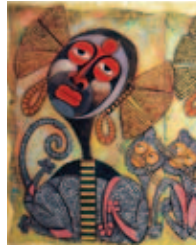
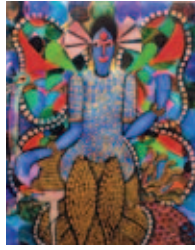
Preview Sunday 22nd June 2014  
from 11 am-5pm  
and thereafter until  
Monday 30th June 2014.

**AIP**  
ARTIST  
INITIATIVE  
PROGRAMME



gallery-g





### **RAJA RAJAN**

Flower-powered folk art trips out, neo-psychedelic and delineated with metallic butis adding up to a differently-approached pointillism.

### **AIP**

The Artist Initiative Programme has been a crucial Gallery g activity from when we began ten years ago. It's our outreach initiative that identifies new and up-and-coming artists who seek an appropriate place to show their work.

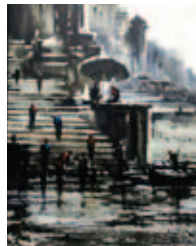
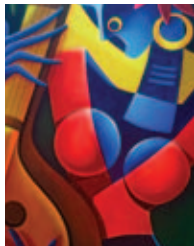
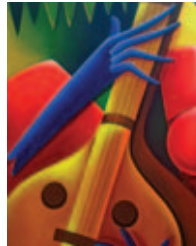
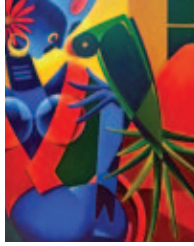
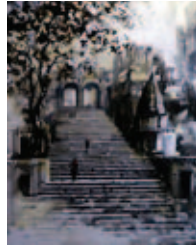


gallery-g

Ashif Hossain  
KVS Prasad

Preview Sunday 22nd June 2014  
from 11 am-5pm  
and thereafter  
until Monday 30th June 2014.





Two consummate artists.  
Accessible and affordable.

### **ASHIF HOSSAIN**

Monochromatic studies that are understated and, yet emphatic: a flight of steps, a river bank, a venerable banyan letting the spaces say as much as the details.

### **KVS PRASAD**

Immediacy of effect, figuratives in full bloom picked out in a traffic-stopping palette.

Maini Sadan, 38 Lavelle Road,  
7th Cross, Bangalore 560 001.  
Ph: +91 80 22219275, 40957559  
Lawrence Ph: +91 99454 65685  
gita@gallerybangalore.com  
www.gallerybangalore.com