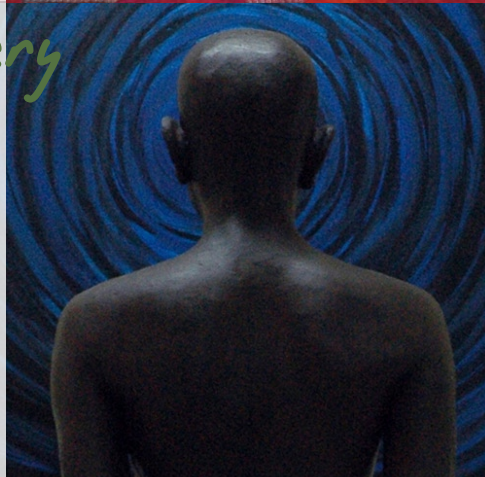


9r8
YEARS • 03•11

our
eighth
anniversary
show

bharti
prajapati
tarun
maity
suvajit
samanta

rajesh
shah



gallery-g

As an
8th anniversary
celebration,
Gallery G
invites you to a
cocktail preview of
GR8 Years 03•11

7.30 onwards
Friday, 25th Feb '11
The Art Corridor,
Taj West End Hotel
where the show will
be on till
Sunday the 27th Feb
and thereafter at our
Lavelle Road space
till Saturday 5th
March.

RSVP LAWRENCE 99454 65685
APART FROM PAINTINGS BY
BHARTI PRAJAPATI AND RAJESH
SHAH, THERE'LL BE SCULPTURE
FOR THE FIRST TIME: BY TARUN
MAITY AND SUVAJIT SAMANTA.



The Taj West End
Bangalore

bharti prajapati

This show features Bharti Prajapati with whom we began eight years ago.

Our connection with her is a treasured one: we were beginning and so was she.

Her first collection of 24 canvases at Gallery G was a sellout. She's now a nationally-regarded painter,



whose works we've shown in the US as well.

Her new work - characteristic, eloquent and richly ornamented - which has been on tour at the NID, Ahmedabad and at the Cymroza Gallery, Mumbai joins us for our 8th anniversary show: symbolically and qualitatively, so fitting.

tarun maity



Waiting
gr8
YEARS • 03•11



gallery-g



This, our first sculpture show contains two people whose work is modern, directional and yet quite different from each other. Tarun Maity, shown here,



works in wood, terracotta, bronze and ABS fiberglass, his portfolio bold, experimental and firmly anchored in an alternative reality.



Maity, *Remembering the past-II*, Wood, Brass, & ABS Fiberglass, 24 inch.

suvajit samanta

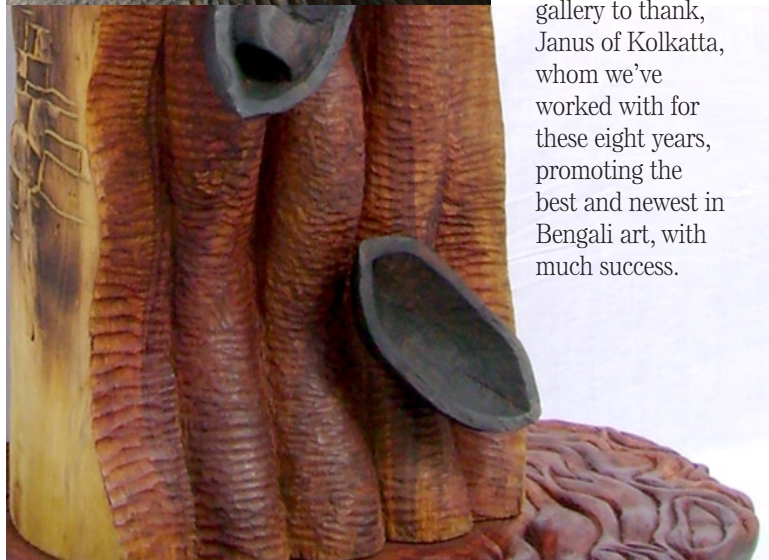


Suvajit Samanta
Suvajit works only in bronze to a smaller than life-size scale. His sculptures are detailed, reflective of his inner vision, almost playful: a child's fairytale forest.



As a start in sculpture we couldn't have chosen two more appropriate people than Suvajit and Tarun.

For this we have our associate gallery to thank, Janus of Kolkatta, whom we've worked with for these eight years, promoting the best and newest in Bengali art, with much success.



gr8
YEARS • 03•11

SCULPTURE IN
ASSOCIATION WITH



Janus
ART GALLERY

Our Eighth Anniversary

An anniversary is time to celebrate the old and begin the new.

On our eighth, it's reason once more to thank you, clients, associates and artists with whom we made the journey since 2003. This year the new is our entry into sculpture, a category we now establish a base in.

We've worked with painters who represent the best of the Indian spectrum whom we have shown in our first

gallery, our second in Vivanta by the Taj, Whitefield which began two years ago and in shows here and abroad.

This show includes Rajesh Shah, since he was our 2010 bestseller: he signifies our future as much as Bharti's legacy with us does.

So now it remains for you, our clients and well-wishers to join us in toasting past, present and future and to enjoy what we've put together just for you, as we always do.



rajesh
shah



gallery-g

Since 2003

Maini Sadan,
38 Lavelle Rd, 7th Cross,
Bangalore 560001.
Ph 080 22219275
10 am-6 pm Mon-Sat
Vivanta by Taj,
ITPB, Whitefield,

Bangalore 560066.
Ph 080 40957559
Round the clock 7 days a week
gita@gallerygbangalore.com
www.gallerygbangalore.com.
Follow us now on
gallery_g_arts

