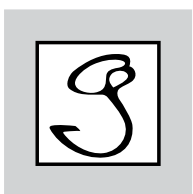




Neo Goa: Coast to Canvas

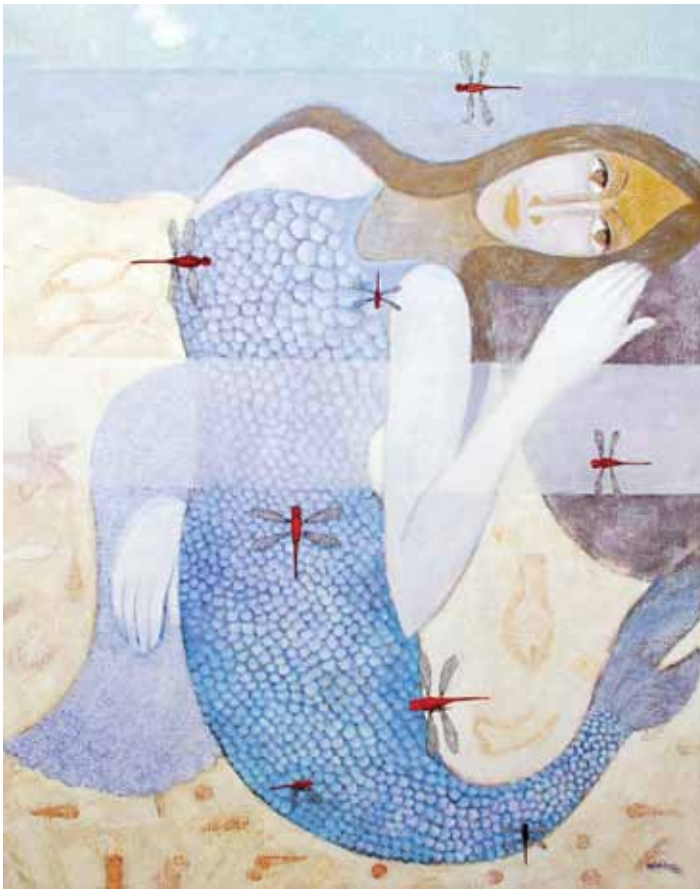
4TH-9TH DEC '08

*Francis D' Souza | Jayant Jadhav | Sandeep Kulkarni
Manish Mistry | Chaitali Morajkar | Hitesh Pankar
Vitesh Naik | Prafulli Shevade | Subas Shilker*



gallery-g

ruchika's
ART GALLERY



*You are invited to
a post-dinner preview of
Neo Goa: Coast to Canvas
over drinks and dessert*

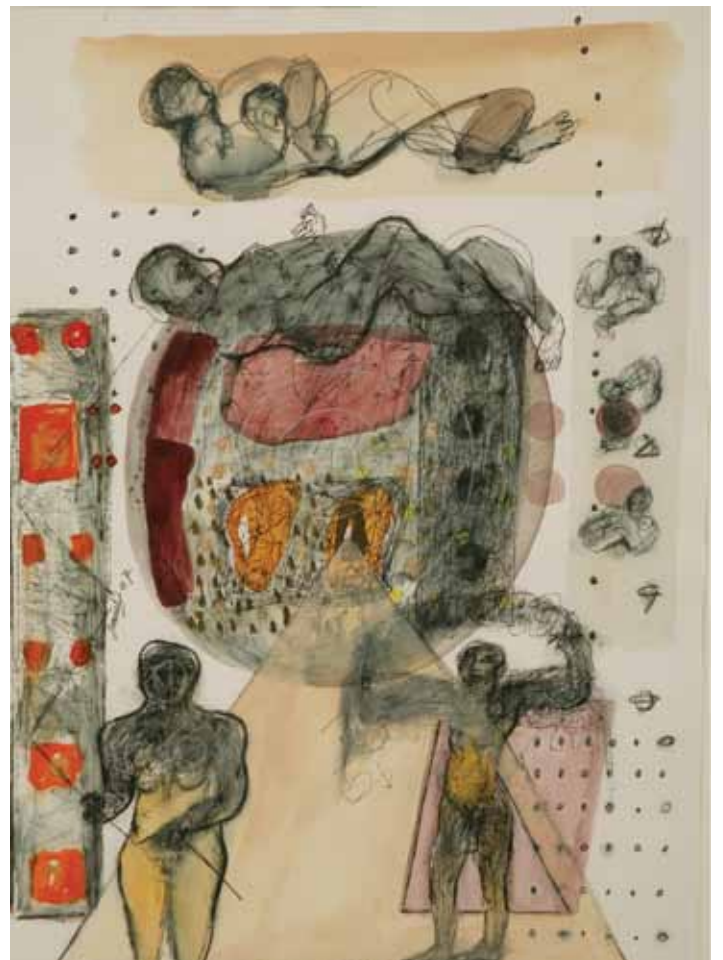
*This is a show in collaboration with
Ruchika Art Gallery, Goa
of new paintings by
Francis D' Souza
Jayant Jadhav
Sandeep Kulkarni
Manish Mistry
Chaitali Morajkar
Hitesh Pankar
Vitesh Naik
Prafulli Shevade
Suhas Shilker*

*on Wednesday 3rd December '08
from 9.30 pm onwards
here at Gallery G*

We hope you'll join us.

RSVP Lawrence or Priya 22219725

*View the collection online at
www.gallerybangalore.com*



This show is a joint initiative with Ruchika's Art Gallery. It brings to Bangalore a selection of modern Goan masters and a few others from the West Coast. This is perhaps the first show of its kind in Bangalore and as such is very timely. Indian art's spectacular growth is as evident in that part of the country and the sophistication

of viewpoint and technique of Goan art means it holds its own anywhere in the world.

We think of holiday locations as being idyllic and so tend to imagine them in conventionally sentimentalized ways, of 'paradise' in paradisiacal terms. Which is why it's a revelation to see how artists from these places portray the world around



neo goa: coast to canvas

them, why it's so bracing to be confronted with clear-eyed, straightforward expressions that have little to do with picture postcard beaches and Carnivals, and everything to do with the 'rurbanism' unique also to Goan literature, music and design. (Rurbanism is a term being used more and more to refer to the culture of places like the West Indies where rural

and urban lifestyles are similar or, indeed, are one and the same.)

We, at Gallery G and Ruchika's, are sure you'll find this is a truly representative collective expression and a fitting re-introduction to one of Indian art's most exciting destinations.



GALLERY G

2008 has been a year of going places – quite literally. There were our first foreign exhibitions in the USA which established our international network, while in India itself we're networked in Mumbai and Kolkata.

Just days from now, we'll open at the new Taj Premium Hotel at the ITPL in Whitefield when the hotel itself opens. Having been in the centre of Bangalore for five years, we now see it necessary to be in Whitefield, a locality vital to this city's growth as an international destination. This allows us to reach out to as many of the city's art lovers and investors as possible. There's also the fact that it makes us easier to access given Bangalore's commuting issues.

Neo Goa will shift here from Lavelle Road to inaugurate the second Gallery G where the collection's impassioned modernity will be superbly set off by The Taj Premium's own restrained, contemporary style.



RUCHIKA'S ART GALLERY

Located in Miramar, Panjim, within earshot of the breakers of the Arabian Sea, Ruchika's Art Gallery is fostering a whole new creative movement. Founded in the memory of the late Ruchika Chowgule – wife, mother, philanthropist and patron of the arts – who gave generously of herself to community causes, the Gallery is something she would have created herself had she had the chance to do so in her all-too-brief 43 years.

Scholarships and residencies along with in-house studios and camps in the flower-filled ambience of a 1,000-acre farm motivate young artists and established masters from all over India while capitalizing on Goa's transient international population to provide a global platform for Indian art.



gallery-g

ruchika's
ART GALLERY

Gallery G, Maini Sadan, 38 Lavelle Rd, 7th Cross, Bangalore 560 001.
Ph 080 22219275 • gita@gallerygbangalore.com
www.gallerygbangalore.com • www.ruchikasart.com